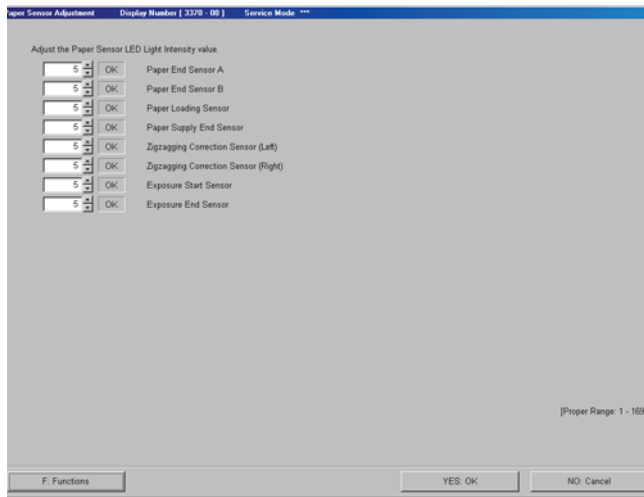


Paper sensor adjustment

Bringing up the display

Menu: 2260 → Extension → Maintenance → Various Adjustment
→ Printer Mechanical Adjustment → Paper Sensor Adjustment



NOTE

- The LED light intensity value of each sensor can be checked and set by inputting the service personnel password (2260).

Explanation

● Paper Sensor Adjustment (standard value: 5) (input range: 0 to 255)

It is the standard value to be used for adjusting the LED light intensity of each sensor.

NOTE

- The normal range of the LED light intensity value of each sensor is from 1 to 169.
- When the paper sensor LED light intensity adjustment was finished abnormally, the numeric value input section becomes 0 and the status section becomes -.

Functions

● Paper Sensor LED Light Intensity Adjustment

Adjust the LED light intensity of each sensor.

NOTE

- With this Paper Sensor LED Light Intensity Adjustment function, the sensors below are adjusted.

Sensors for Sensor LED Light Intensity Value Adjustment
Paper end sensor A or B
Paper loading sensor
Paper supply end sensor
Zigzag correction sensors (left and right)
Exposure start sensor
Exposure end sensor

- The paper end sensor A is not displayed when the dual paper magazine unit is not attached.

● Adjustment

● Paper Sensor LED Light Intensity Adjustment

- Check that each printer cover of the printer section and printer doors are closed.
- Carry out Paper Sensor LED Light Intensity Adjustment.

NOTE

- The LED light intensity value of each sensor is not displayed if the service personnel password has not been input.
- After Paper Sensor LED Light Intensity Adjustment is completed normally, **OK** is displayed.
OK: When the LED light intensity of each sensor is from 1 to 169
- After Paper Sensor LED Light Intensity Adjustment is not completed normally, - is displayed.
-: When the LED light intensity of each sensor is 0 or 170 or more