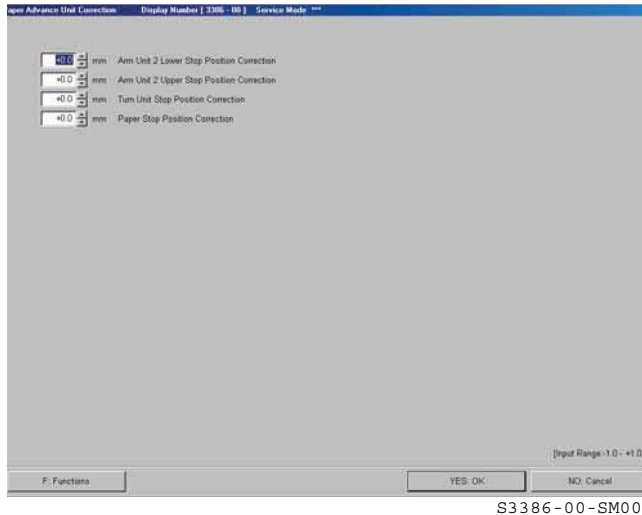


Paper Advance Unit Correction

Bringing up the display

Menu: 2260 → Extension → Maintenance → Various Adjustment
→ Printer Mechanical Adjustment → Paper Advance Unit Correction



NOTE

- It can be set by entering the service personnel password (2260).

● Explanation

Carry out each correction for the paper advance unit.



IMPORTANT

- When the paper advance unit correction is carried out by paper magazine A, B, it is complete.
- After replacing the paper advance unit, carry out adjustment by following the procedure below.
 - Carry out Light Axis Adjustment (when replacing or readjusting the scanner unit).
 - Carry out Light Axis Adjustment (when replacing or readjusting the scanner unit).
 - Carry out Light Axis Adjustment (when replacing or readjusting the scanner unit).
 - Carry out Light Axis Adjustment (when replacing or readjusting the scanner unit).

● Arm Unit 2 Lower Stop Position Correction (Initial value: 0.0) (Input range: -1.0 to +1.0)

The paper receive position of arm unit 2 is corrected.

● Arm Unit 2 Upper Stop Position Correction (Initial value: 0.0) (Input range: -4.0 to +4.0)

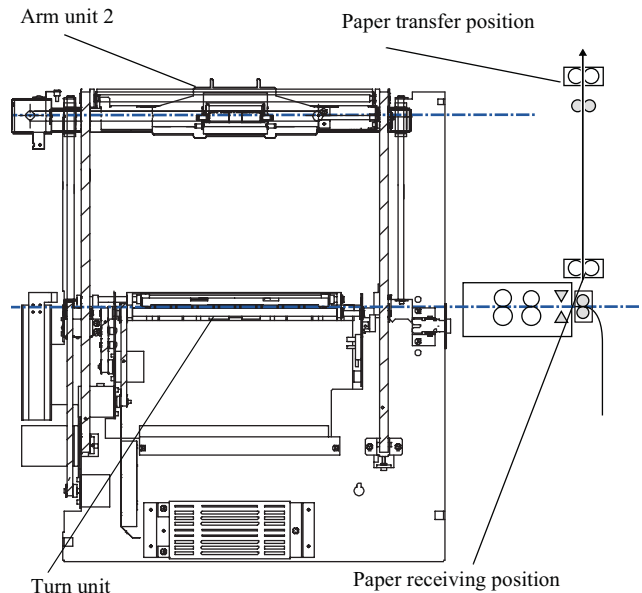
The paper transfer position of arm unit 2 can be corrected.

● Turn Unit Stop Position Correction (Initial value: 0.0) (Input range: -2.0 to +2.0)

The paper receive position of the turn unit can be corrected.

● Paper Stop Position Correction (Initial value: 0.0) (Input range: -4.0 to +4.0)

Corrects the stop position of the paper rear end where the turn unit receive the paper from the exposure advance unit.



G074550

● Functions

● Arm Unit 2 Test Operation

The correction values for **Arm Unit 2 Lower Stop Position Correction** and **Arm Unit 2 Upper Stop Position Correction** are canceled, and arm unit 2 moves back and forth between the paper transfer position and the paper receiving position.

The following operation starts by pressing **YES**.

- First time: Carries out the initial operation and arm unit 2 moves to the paper receiving position.
- Second time: Arm unit 2 moves to the paper transfer position.

NOTE

- The operation returns to the first operation by pressing **YES**, after pressing another key or opening/closing the paper advance door.

● Arm Unit 2 Test Operation Confirmation

The correction values for **Arm Unit 2 Lower Stop Position Correction** and **Arm Unit 2 Upper Stop Position Correction** become valid, and arm unit 2 moves back and forth between the paper transfer position and the paper receiving position.

● Arm Unit 2 Test Operation (left)

Arm unit 2 moves to the paper transfer position (left).

● Arm Unit 2 Test Operation (right)

Arm unit 2 moves to the paper transfer position (right).

● Test Operation for the Turn Unit Stop Position Correction

The correction value for **Turn Unit Stop Position Correction** is canceled, and the turn unit stops at the paper receiving position.

● Turn Unit Stop Position Correction Test Operation Confirmation

The correction value for **Turn Unit Stop Position Correction** becomes valid, and the turn unit stops at the paper receiving position.

● Test Operation for the Paper Stop Position Correction

The correction value for **Paper Stop Position Correction** is canceled, and the paper is loaded and stops at the paper stop position after the turn unit operates the initial operation.

● Paper Stop Position Correction Test Operation Confirmation

The correction value for **Paper Stop Position Correction** becomes valid, and the paper is loaded and stops at the paper stop position after the turn unit operates the initial operation.

● Adjustment

● Before each adjustment



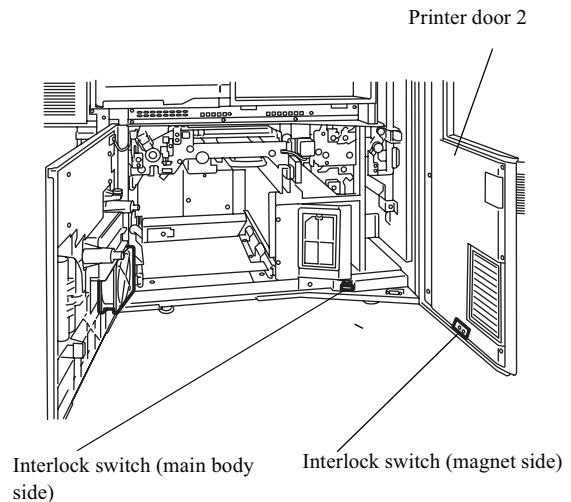
IMPORTANT

- Check the operation of arm unit 2 and the turn unit with Interlock Switch (Printer Door 1, 2) turned ON intentionally and paper advance door 2 opened. Be sure not to put your hands into the paper advance section.
- Be sure not to pull the paper advance unit out with the Interlock Switch (Printer Door 1, 2) turned ON. It may damage the machine.

Remove the printer door 2 interlock switch, attach it to the main body, then turn on the switch. (two screws)

NOTE

- Attach the printer door 2 interlock switch to the main body with tape or the like.



G074549

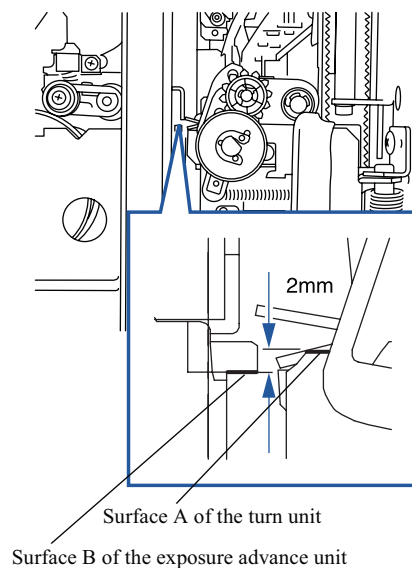
● Turn Unit Stop Position Correction

1. Carry out **Turn Unit Stop Position Correction Test Operation Confirmation** via the **F: Functions**, and stop the turn unit at the paper receiving position.
2. Input the correction value so that the height of surface A of the turn unit is 2 mm high from surface B of the exposure advance unit.



IMPORTANT

- When checking, keep your eyes horizontal so as not to tilt the adjustment position.



↑ -correction

↓ +correction

G074586

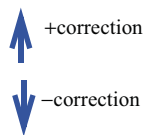
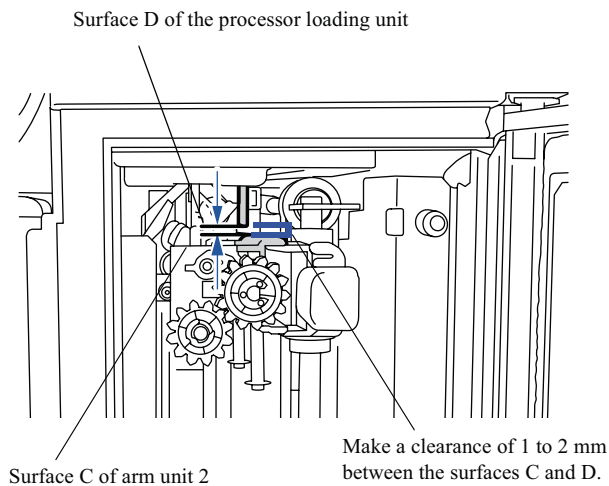
● Arm Unit 2 Upper Stop Position Correction

1. Carry out **Arm Unit 2 Test Operation Confirmation** via the **F: Functions**, and move arm unit 2 to the paper transfer position.
2. Input the correction value so that surface C of arm unit 2 may come to the position 1 to 2 mm away from surface D of the processor loading unit.



IMPORTANT

- When checking, keep your eyes horizontal so as not to tilt the adjustment position.
- When + correction value is input too much for **Arm Unit 2 Upper Stop Position Correction**, it touches surface D of the processor loading unit. Be careful to avoid it.



G074584

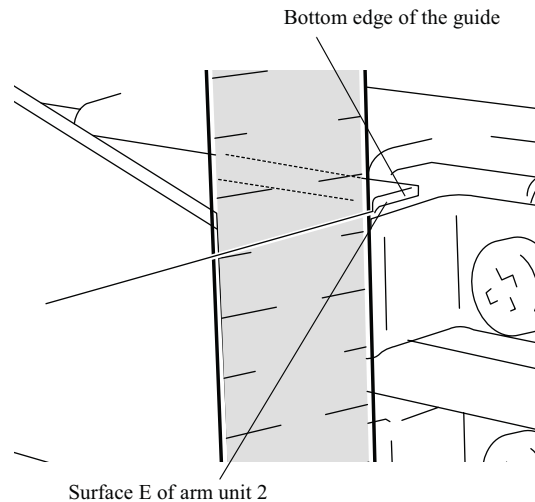
● Arm Unit 2 Lower Stop Position Correction

1. Carry out **Arm Unit 2 Test Operation Confirmation** via the **F: Functions**, and move arm unit 2 to the paper receiving position.

2. Input the correction value so that surface E of arm unit 2 come away 45.5 ± 0.5 mm from surface F of the turn unit.

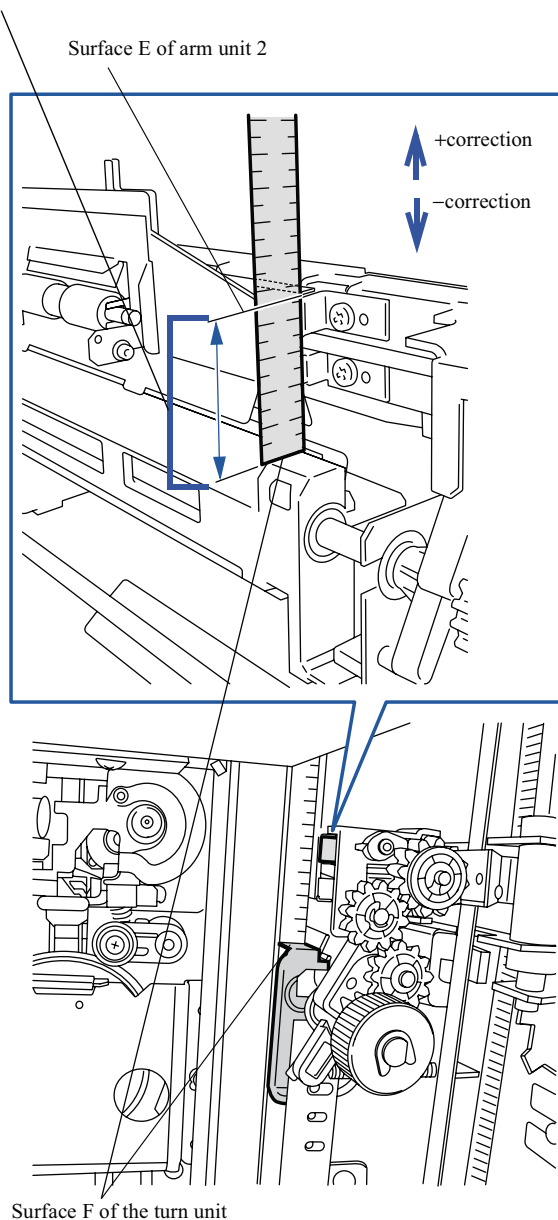
NOTE

- Measure surface E of arm unit 2 from the bottom edge of the turn unit guide.



G076391

Make a clearance of 45.5 ± 0.5 mm between the surfaces E and F.



G074579

● Paper Stop Position Correction

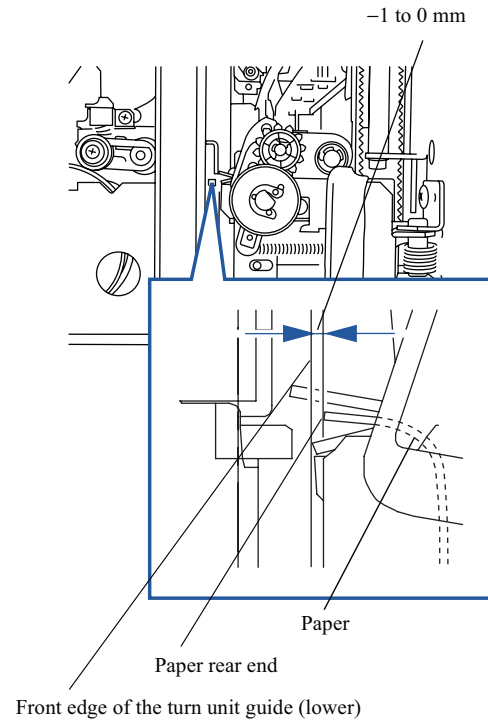
1. Carry out **Paper Stop Position Correction Test Operation Confirmation** via the **F: Functions**, and stop the paper at the turn unit.

2. Input the correction value so that the front edge of the turn unit guide (lower) come away -1 to 0 mm from the paper rear end.



IMPORTANT

- Check the paper rear end carefully.



-correction



+correction

G074585

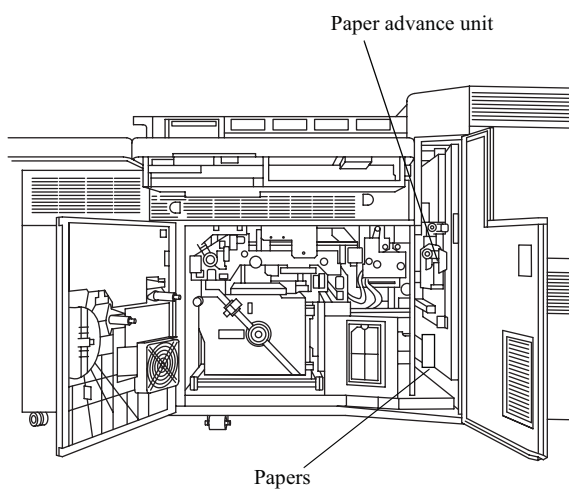
3. The message **Confirm the paper stop position, then remove the paper.** appears. Press the **YES: OK** key.



IMPORTANT

- If one or more of the doors in the printer section is open, paper is not fed.

4. Open the paper advance door, remove the test paper from the bottom of the paper advance unit, then press the **YES: OK** key.



G074529